

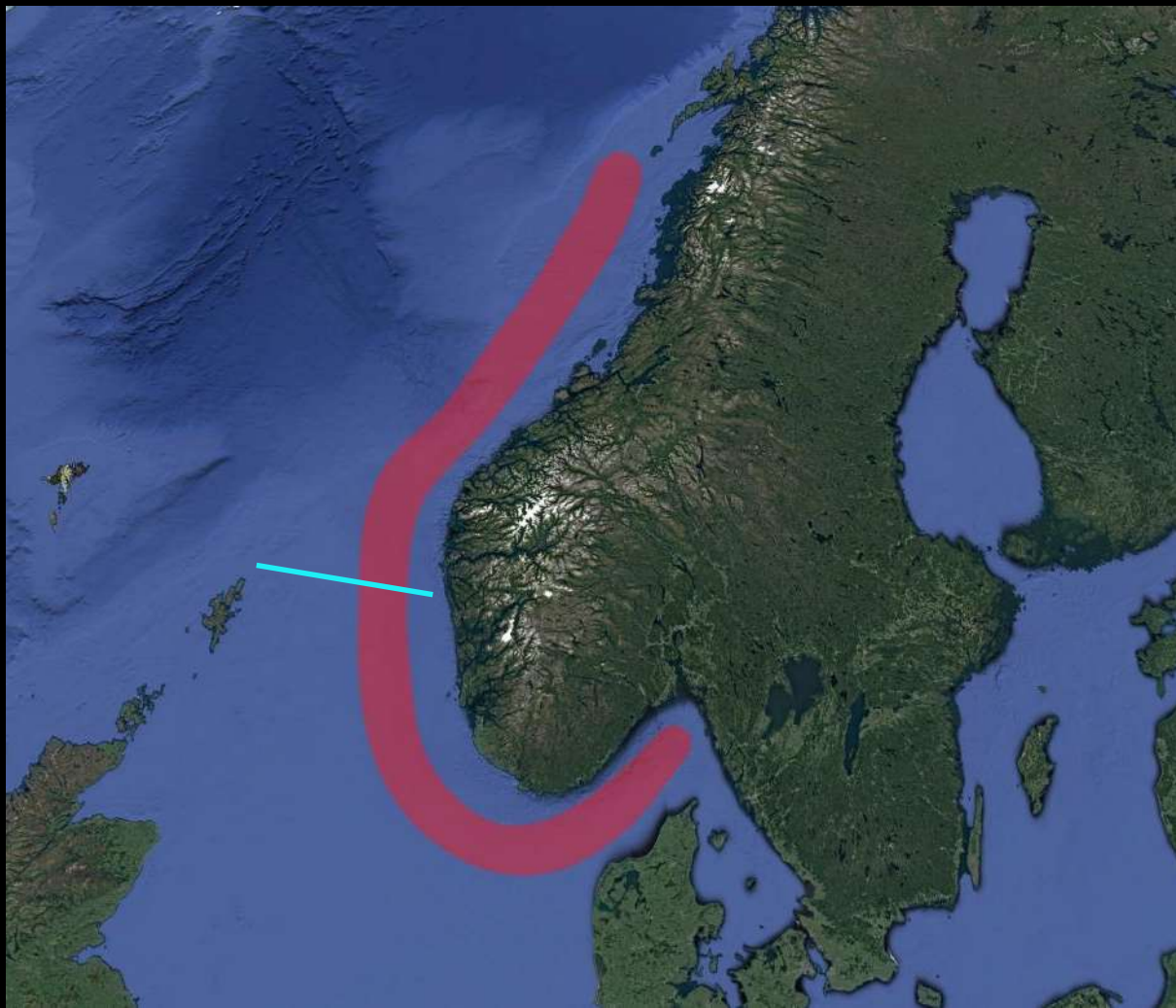
# Geodynamic modelling – a new technique to aid exploration

Sebastian G. Wolf  
PhD student at UiB



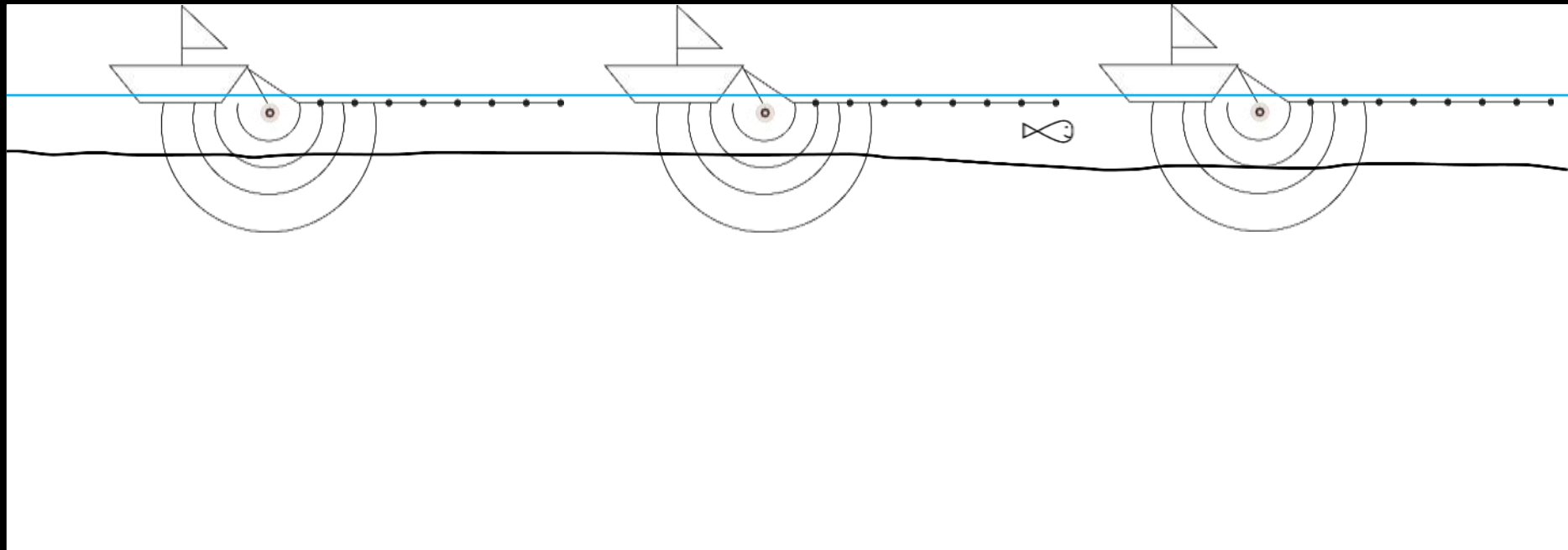
UNIVERSITY OF BERGEN

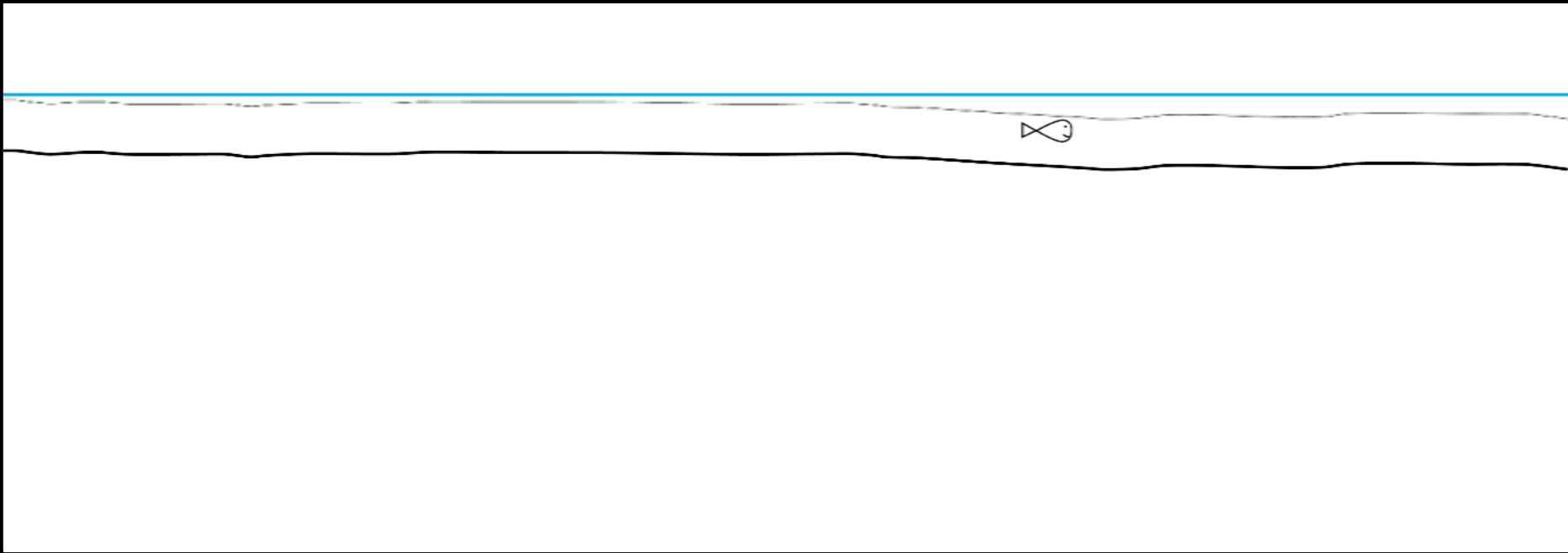


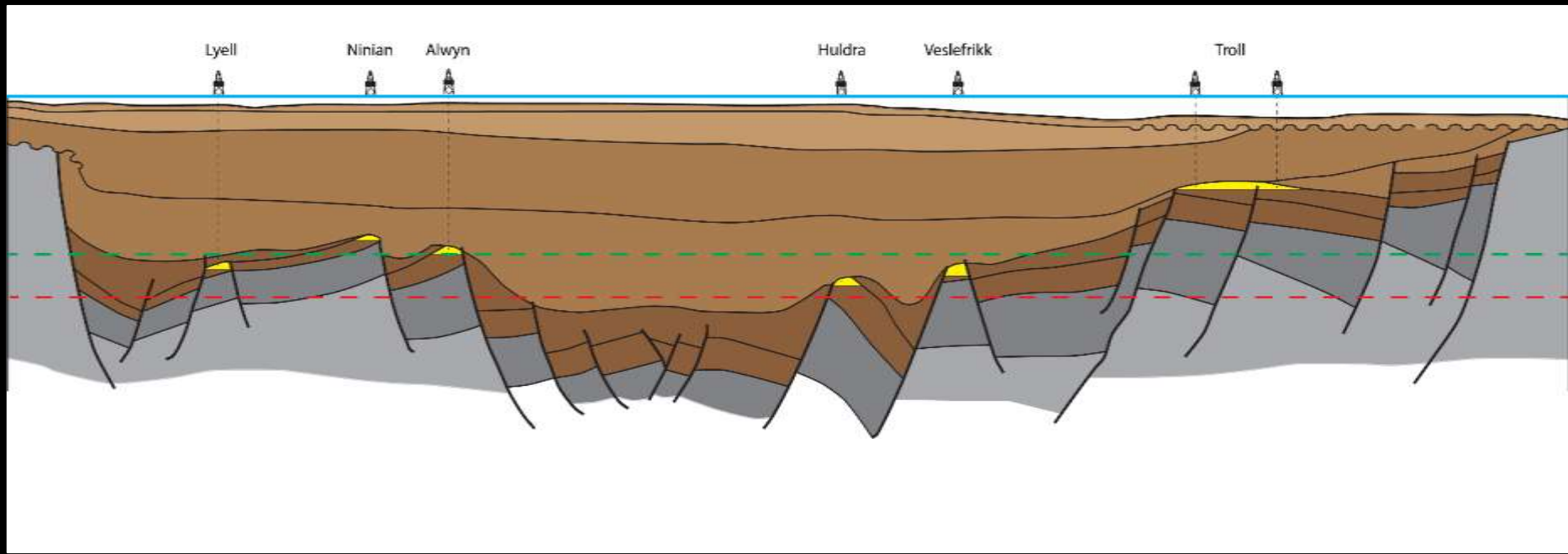


- Norway is surrounded by passive margins.
- Passive margins are areas where the Earth crust is stretched.
- They host Norway's hydrocarbons.
- How do they look like?









- How did the structures form?
- What is the evolution of temperature through time?



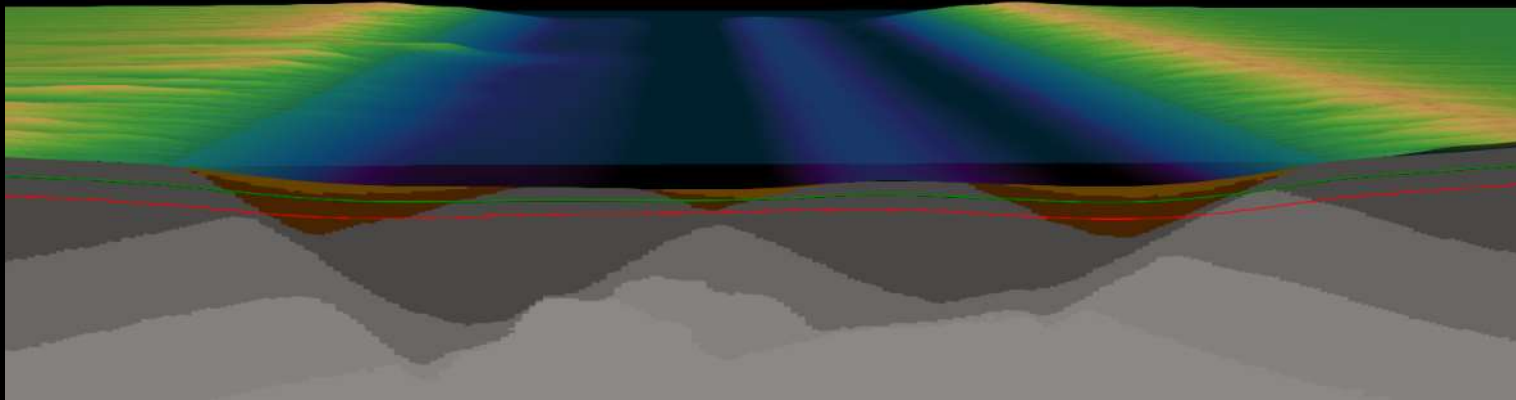
# Geodynamic modelling

Physics describing

- a) Deformation
- b) Heat transport
- c) Surface processes

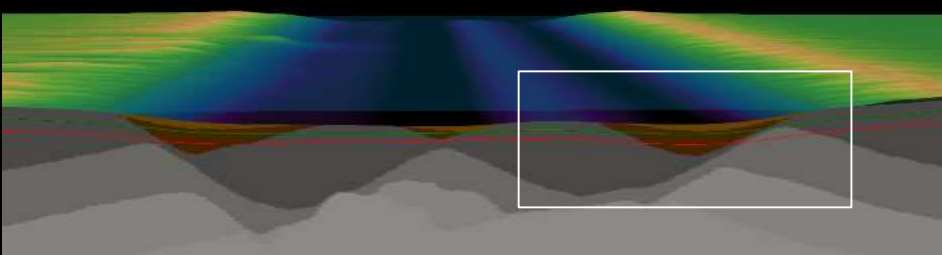


Supercomputer

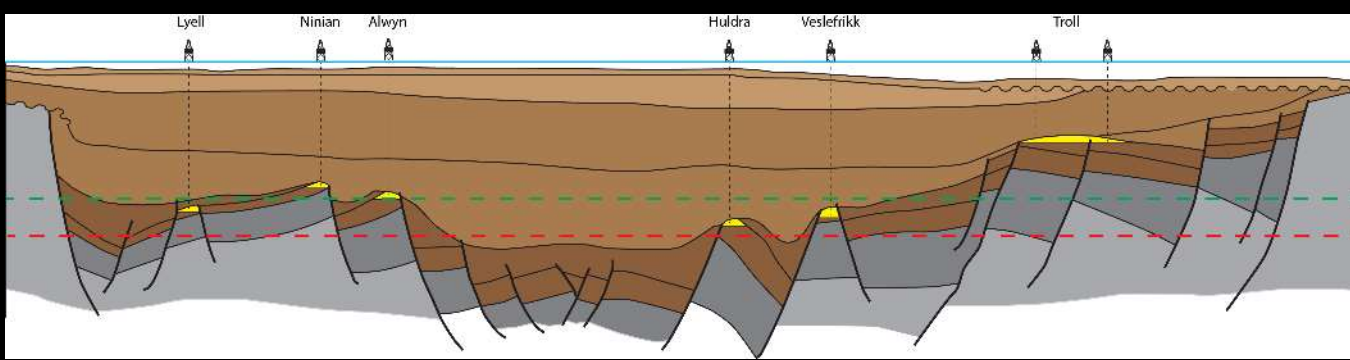




We can investigate the evolution of a particular area







New modelling technique aids exploration in basins like the North Sea

