



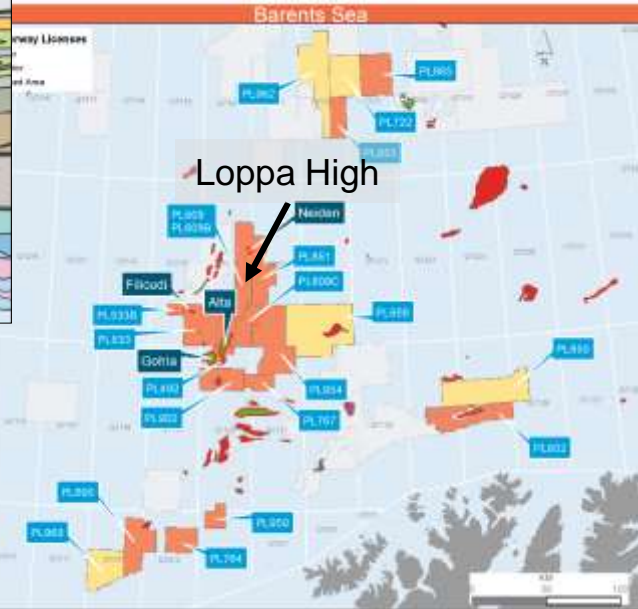
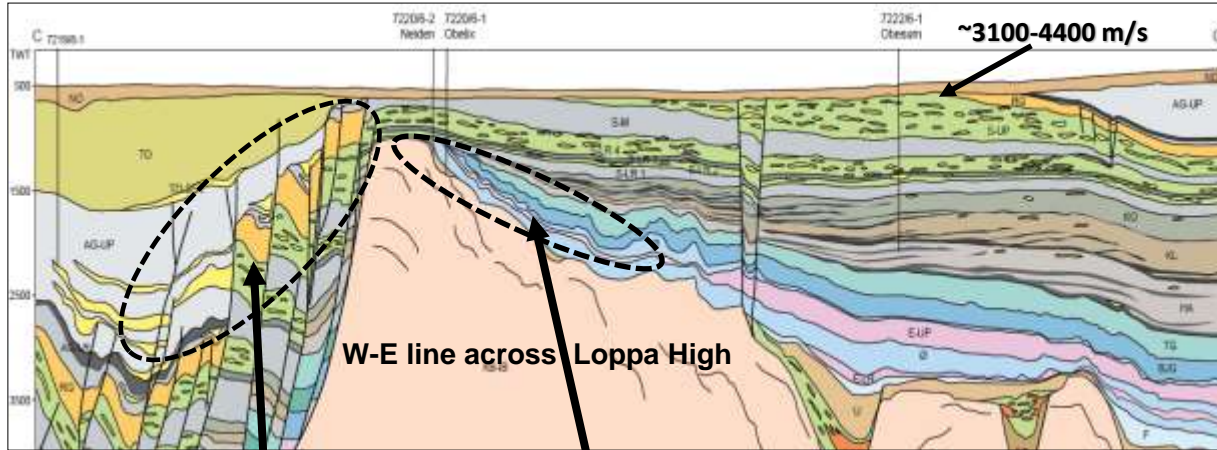
Lundin
Norway



TopSeis Et samarbeid med CGG

Halvor Jahre, Exploration Director - Lundin Norway

- Loppa High is a core area for Lundin in the Barents Sea
- Multiple play models proven, spanning Tertiary to Carboniferous



Sandstones reservoirs deposited in deltas and coast environments

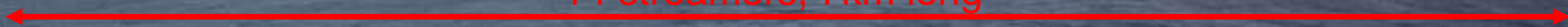
Carbonates

Carbonates are reservoirs formed by organisms or as evaporites

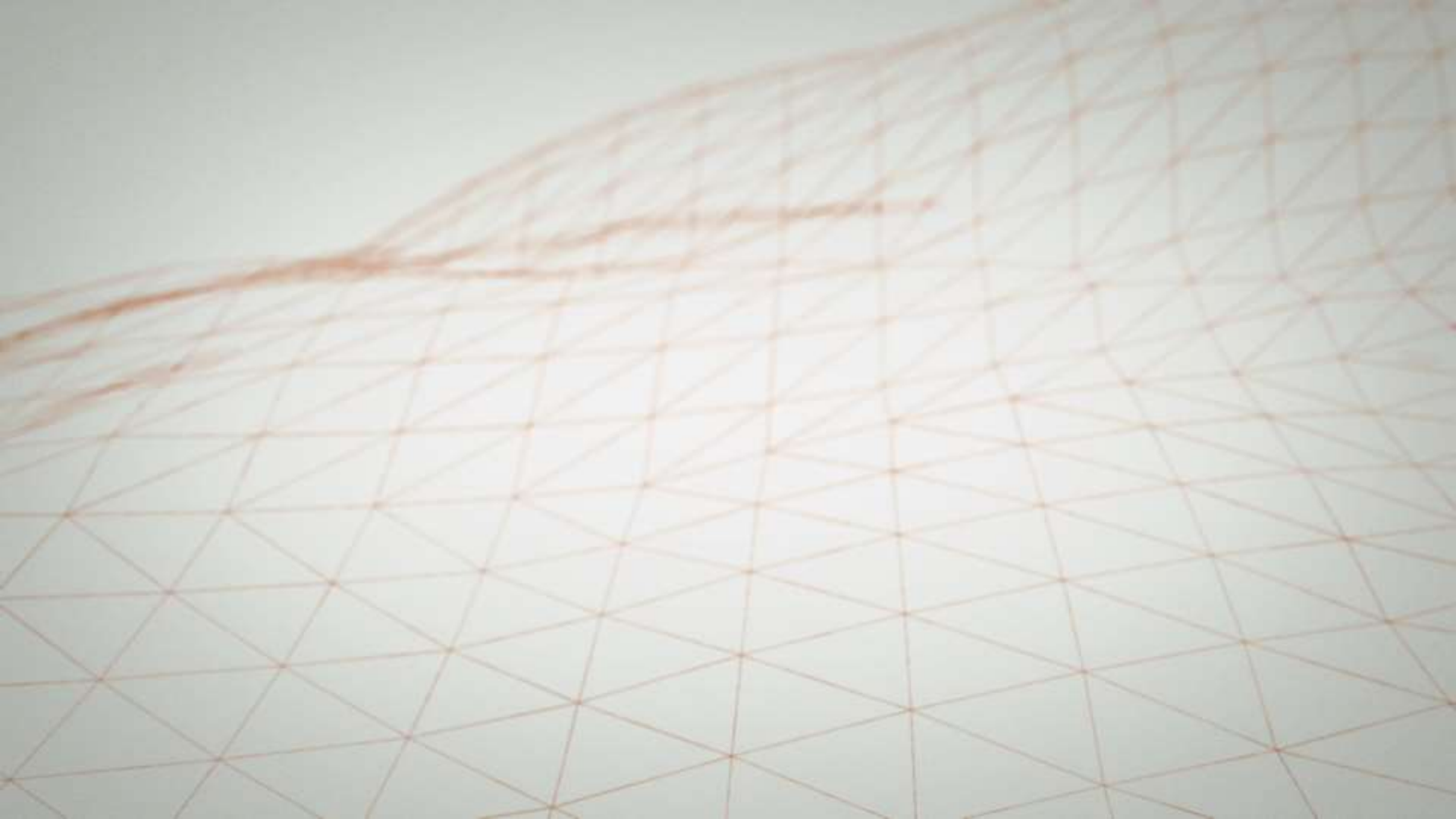


Source vessel

14 streamers, 7km long

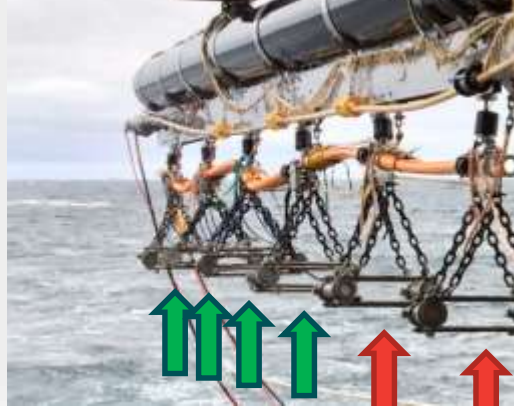
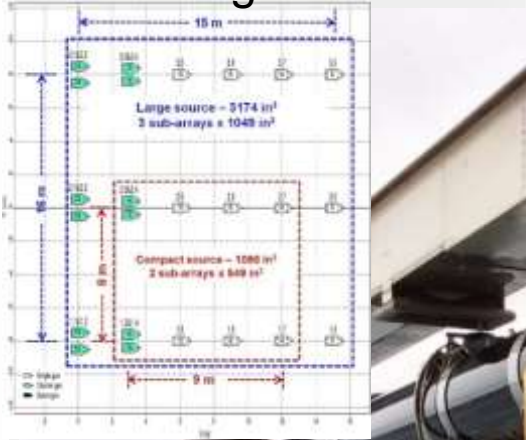


Lundin Norway
OG21- 2018

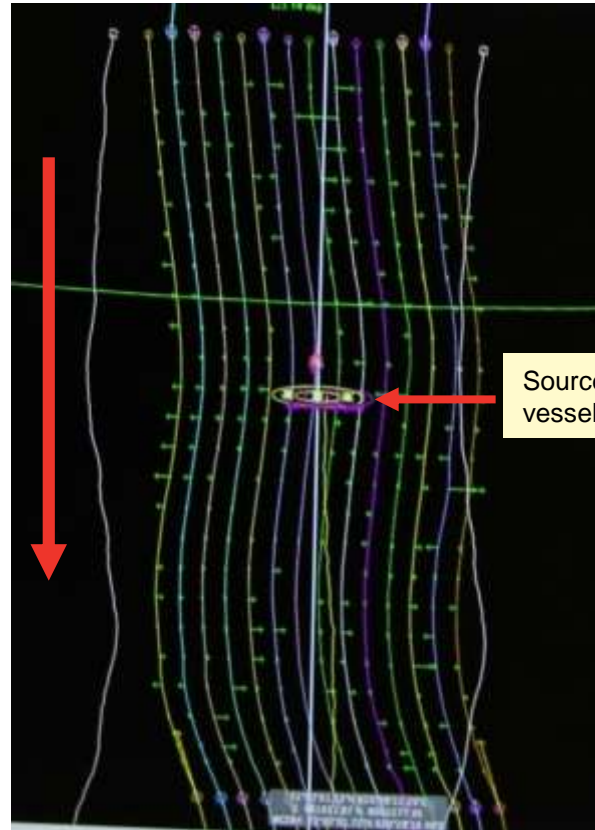


The Technology

Shrinking the source

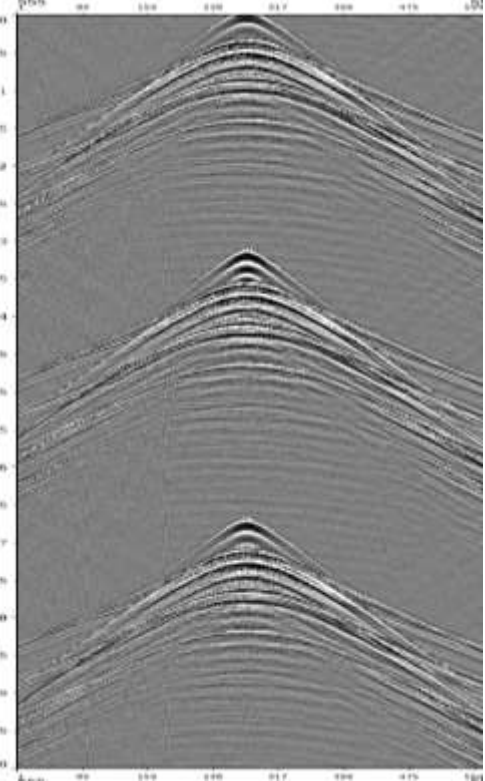


Source over streamers

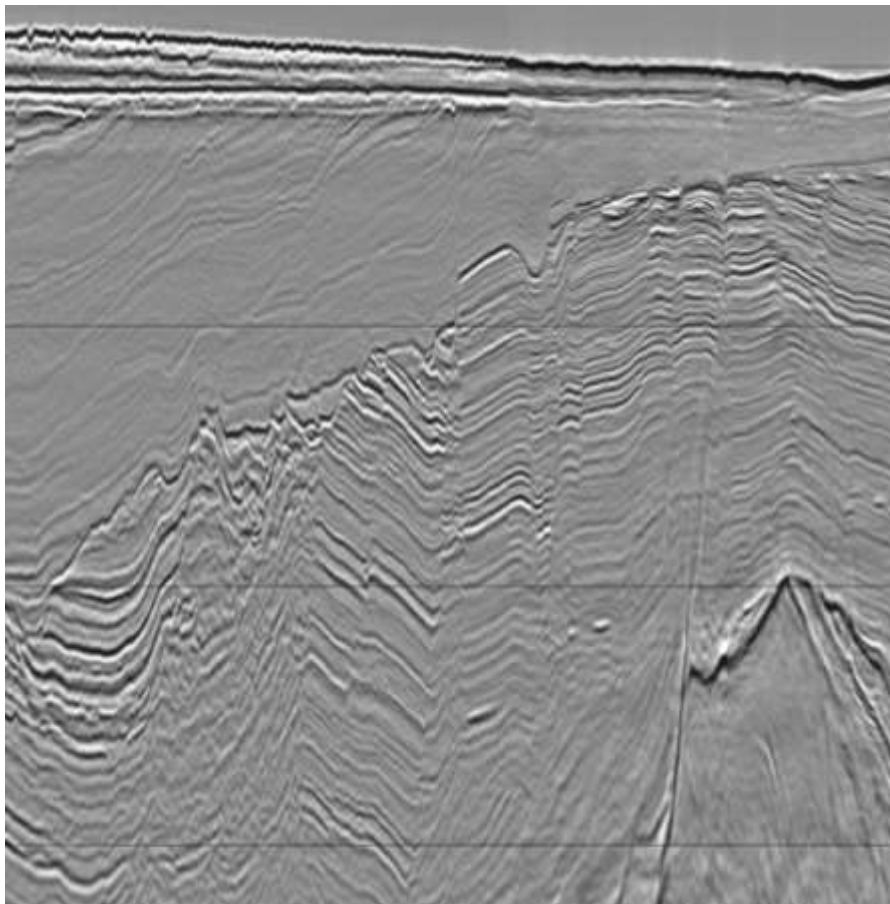


Recording vessel

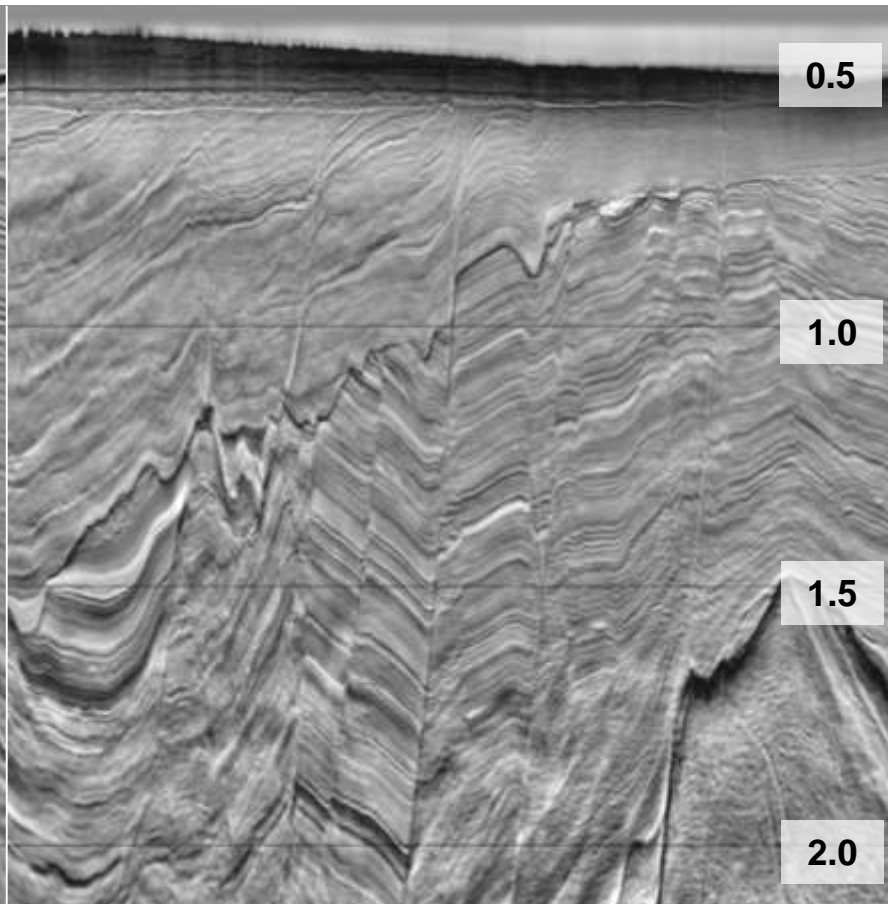
Dense Shooting 3.6s



Legacy data

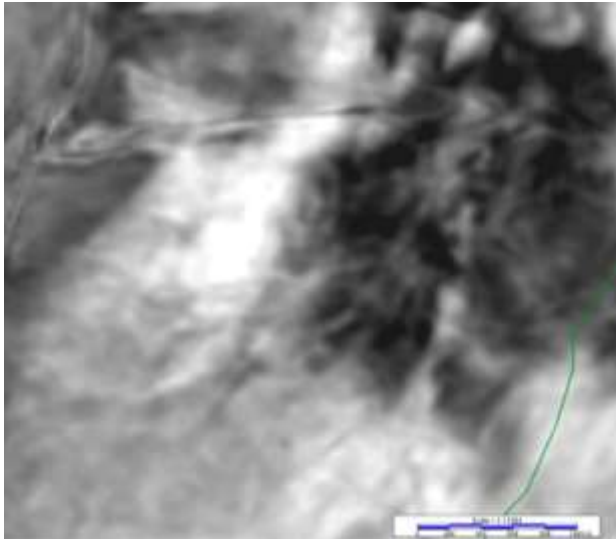


TopSeis data

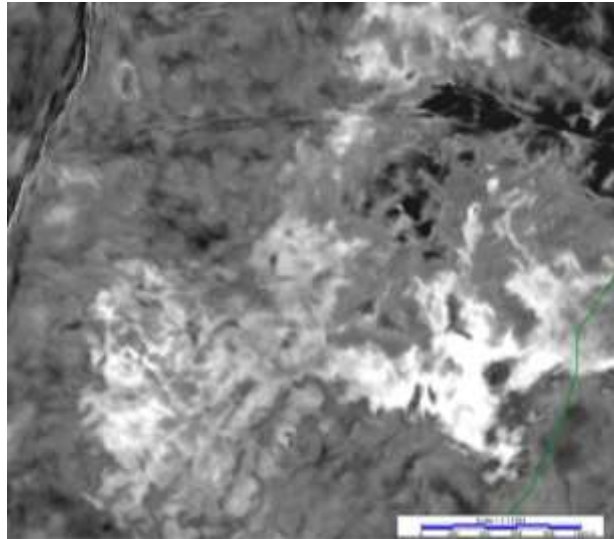


Data examples - Timeslices

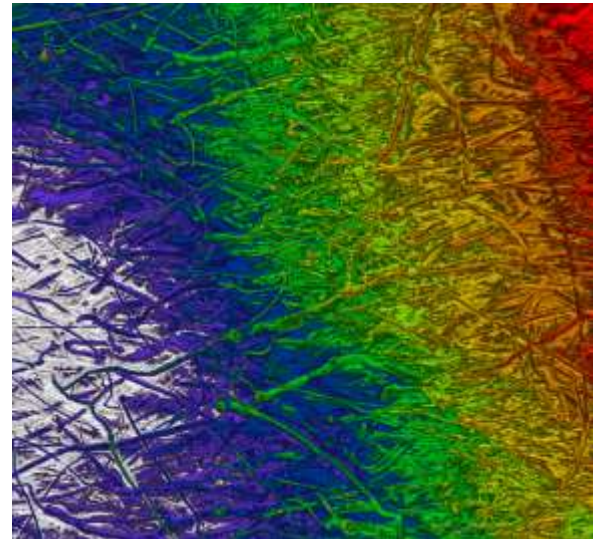
Legacy data



TopSeis data, inverted



TopSeis data, Waterbottom



Triple-3-source

The best way to predict the
future is to create it

Peter Drucker

Hexa-6-source

The best way to predict the
future is to create it

Peter Drucker

Deca-10-source

The best way to predict the
future is to create it

Peter Drucker

Lundin
Norway



Thank you for your attention!

www.lundin-norway.no